



Indianapolis Local Education Alliance

December 3, 2025

Agenda

- Welcome and Opening Remarks
- Public Comment
- ILEA Discussion and Next Steps
- Closing

Welcome and Opening Remarks

Public Comment Procedure

For everyone to have a fair chance to speak and be heard, please observe the following rules:

First, each speaker will be limited to **1** minute. When the timer sounds, please conclude your statement.

Second, please ensure comments are reasonably related to the work of the ILEA and address the alliance as a whole.

Finally, please avoid repeating what a prior speaker has said so that we may hear from as many people as possible.

Public Comment

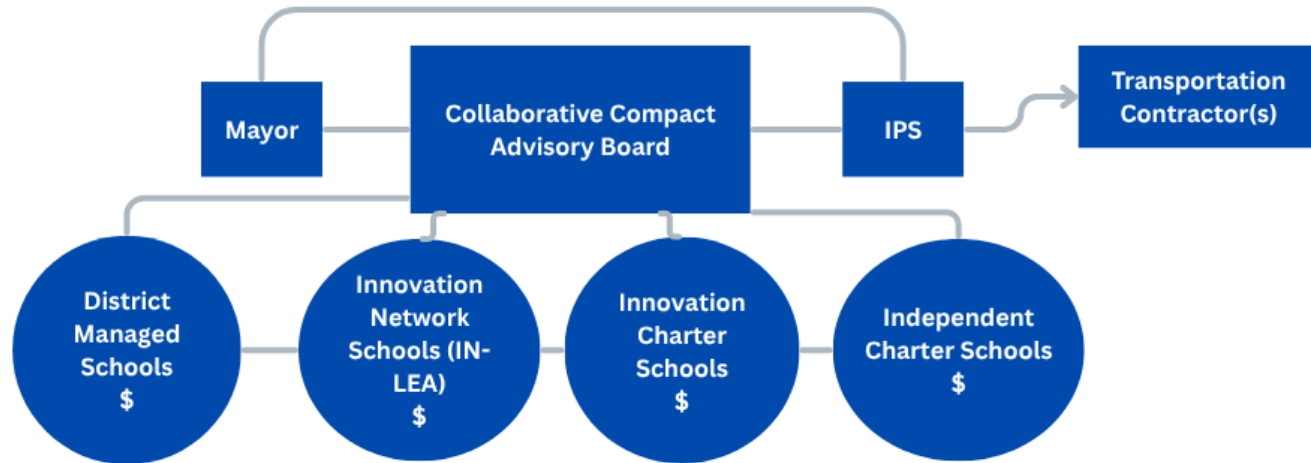
Transportation Models

Transportation Taskforce

Transportation Model

Option 1

The Collaborative Compact Option



Transportation Districts/Walk Zones
Extracurricular Approaches to be determined
by voting members of the compact

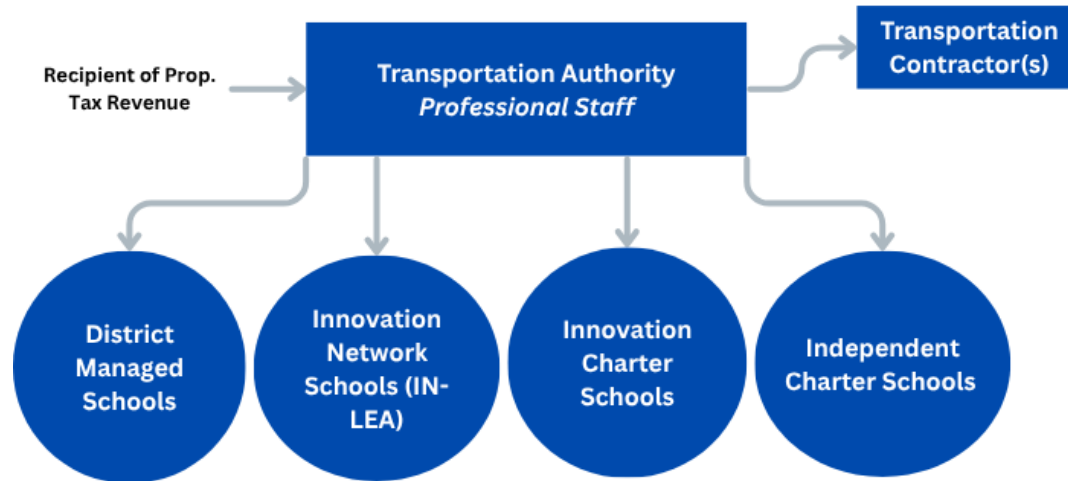
Fee for service model from users/members of compact - dollars go to schools, schools pay for services
Access to operating revenues

Transportation Taskforce

Transportation Model

Option 2

Independent Transportation Authority Model



Authority makes decisions of
districts/walk-zones, extracurricular transportation
etc.

Property Tax Dollars for
transportation go to the Transportation Authority

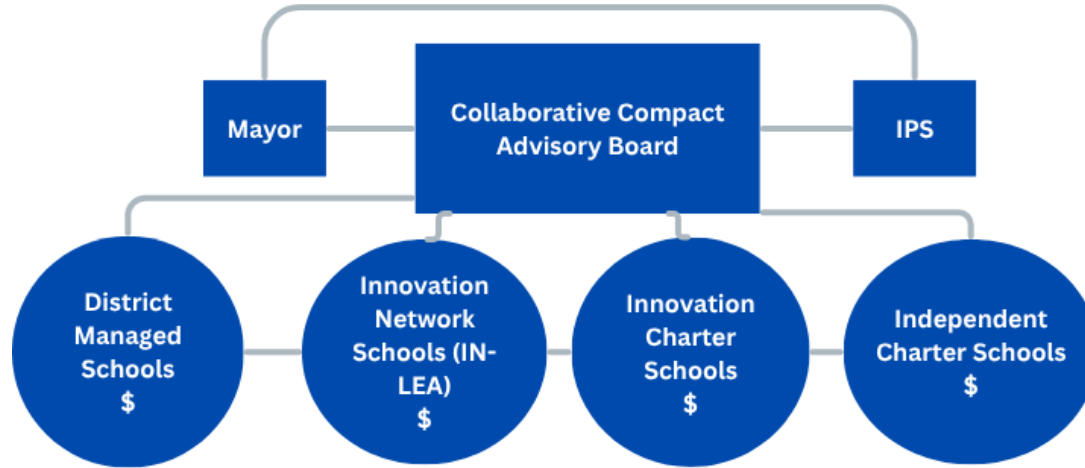
Facilities Models

Facilities

Facilities Model Option

1

The Collaborative Compact Option



Shared Metrics for Opening/Closing & Schools

- Accountability & Performance Standards - set as policy by Voting Members of the Compact
- Money goes to the school & a fee for services is paid
- Statutorily created so that compact decisions are binding

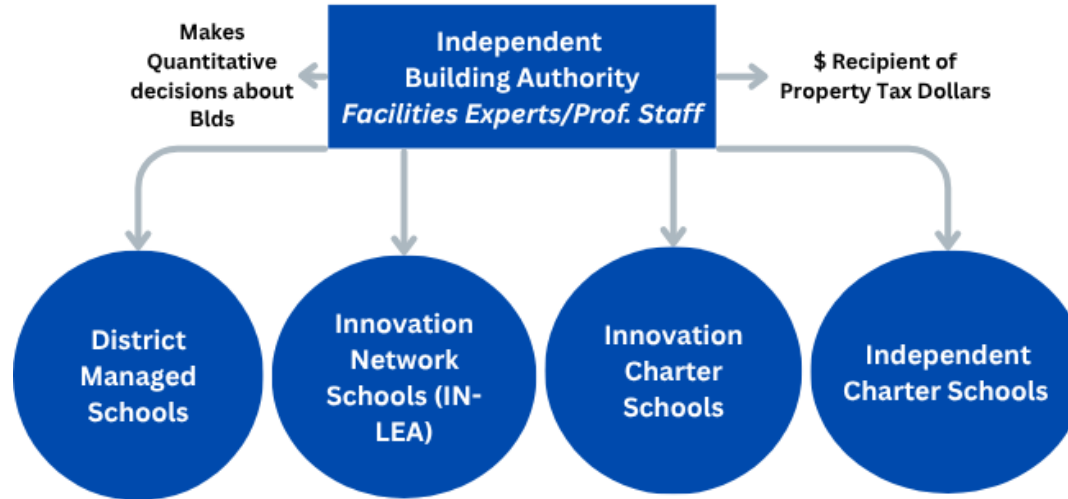
Questions remains about how charter schools would have access to debt absent a governance discussion."

Facilities

Facilities Model Option

2

Independent Buildings Authority Model



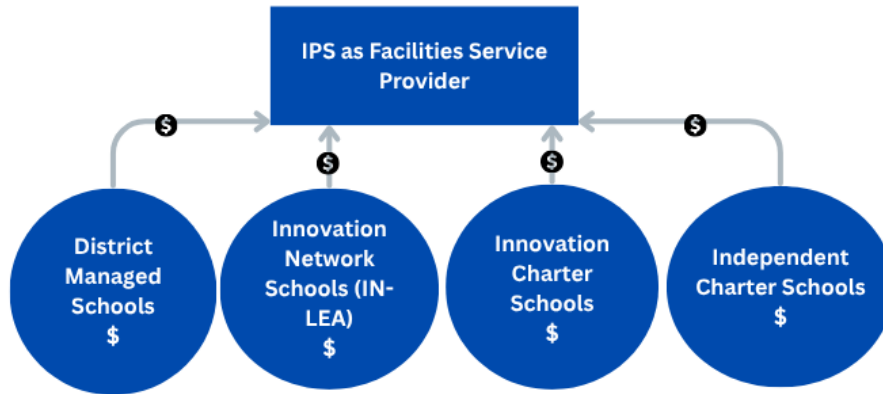
1* Question remains about how to do that absent a governance discussion.

Facilities

Facilities Model Option

3

Service Provider Model



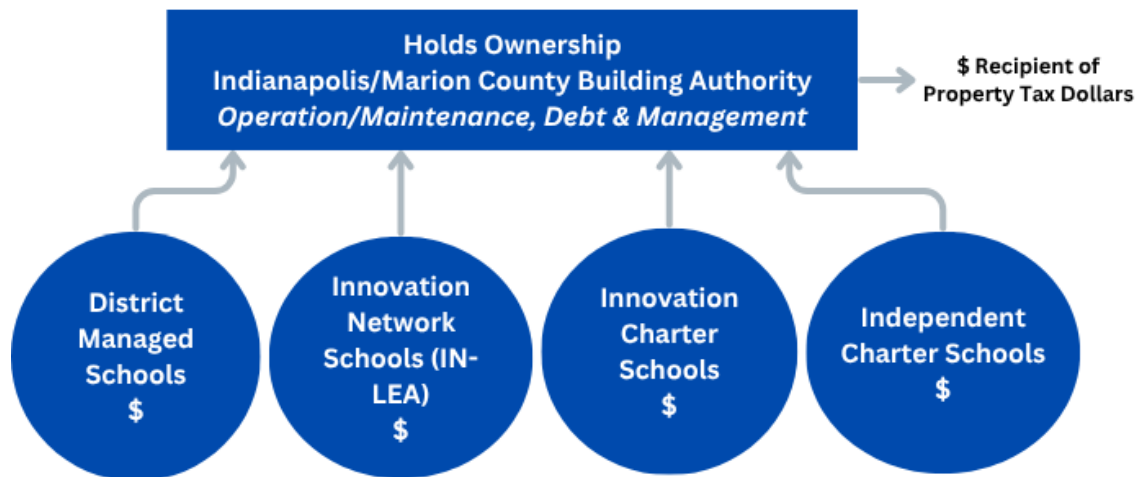
Under this model the property tax dollars go to the schools, they would pay for services

Questions remain about: Chartering Authority
Accountability Standards - where policy decision making resides
School Openings & Closings
How to do that absent a governance discussion

Facilities

Facilities Model Option

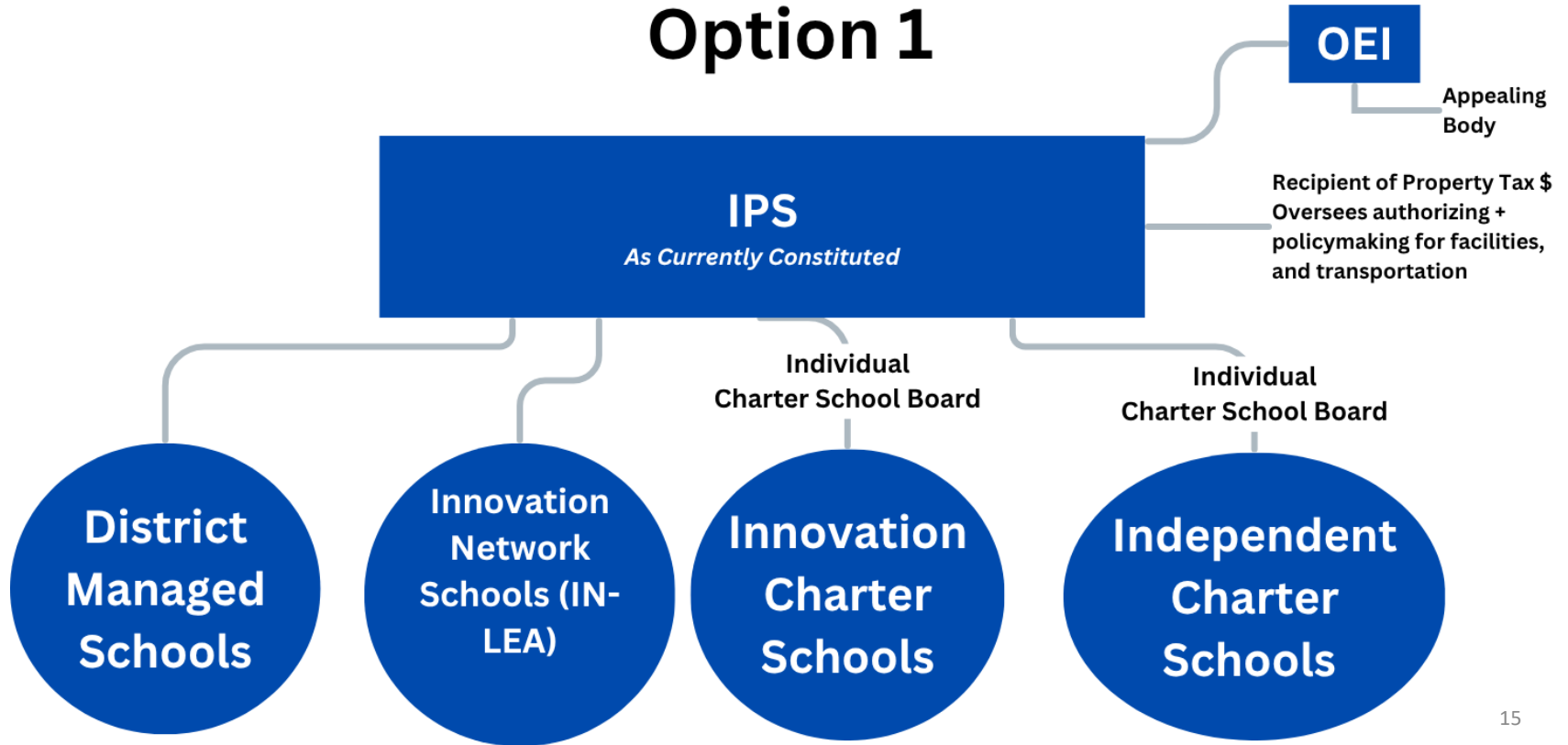
4



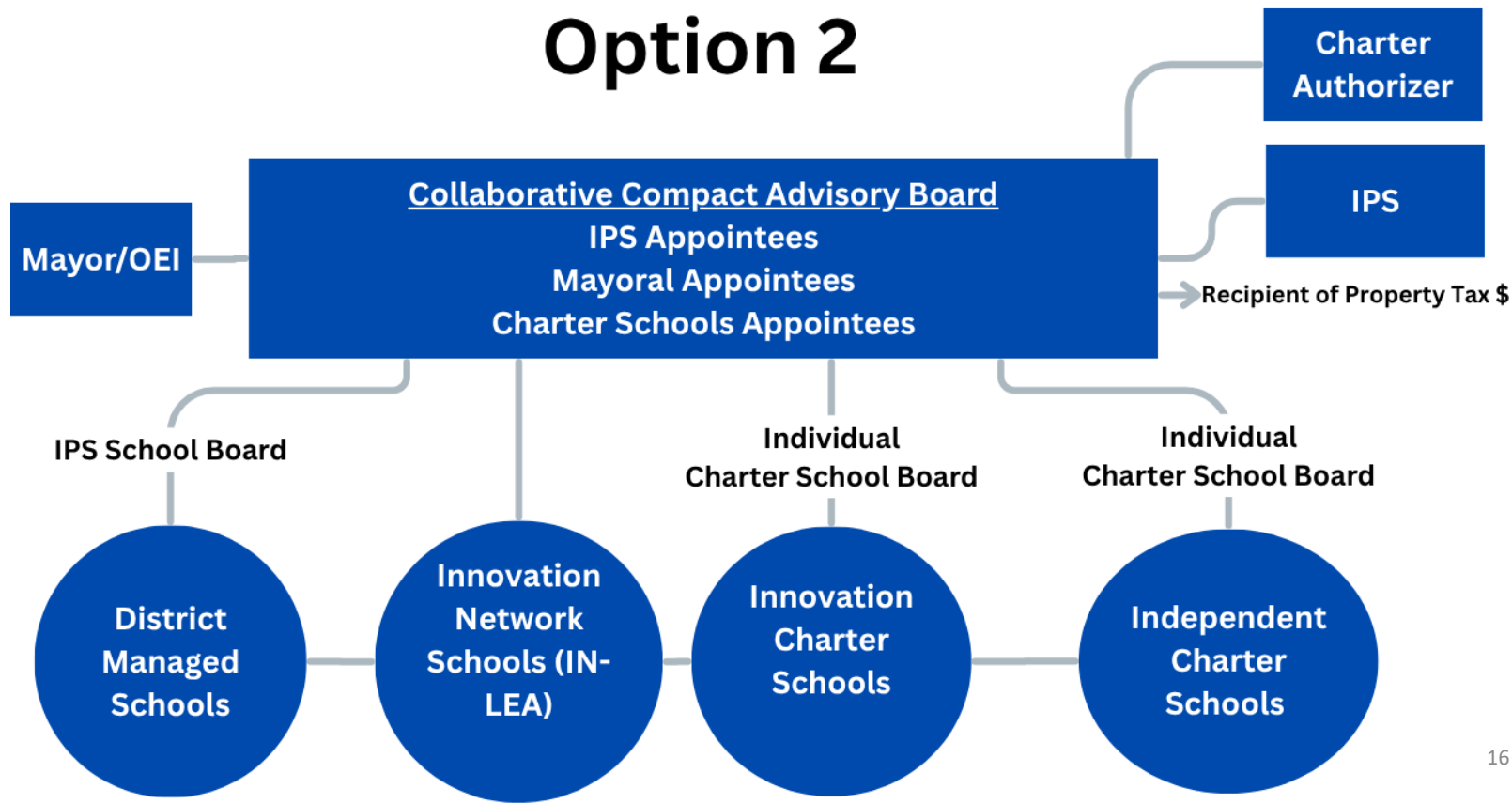
- While this would shift ownership or operations of facilities to an existing entity, it does not answer the policy questions and need for governance clarity.

Governance

Governance Governance Model Option 1



Governance Governance Model Option 2

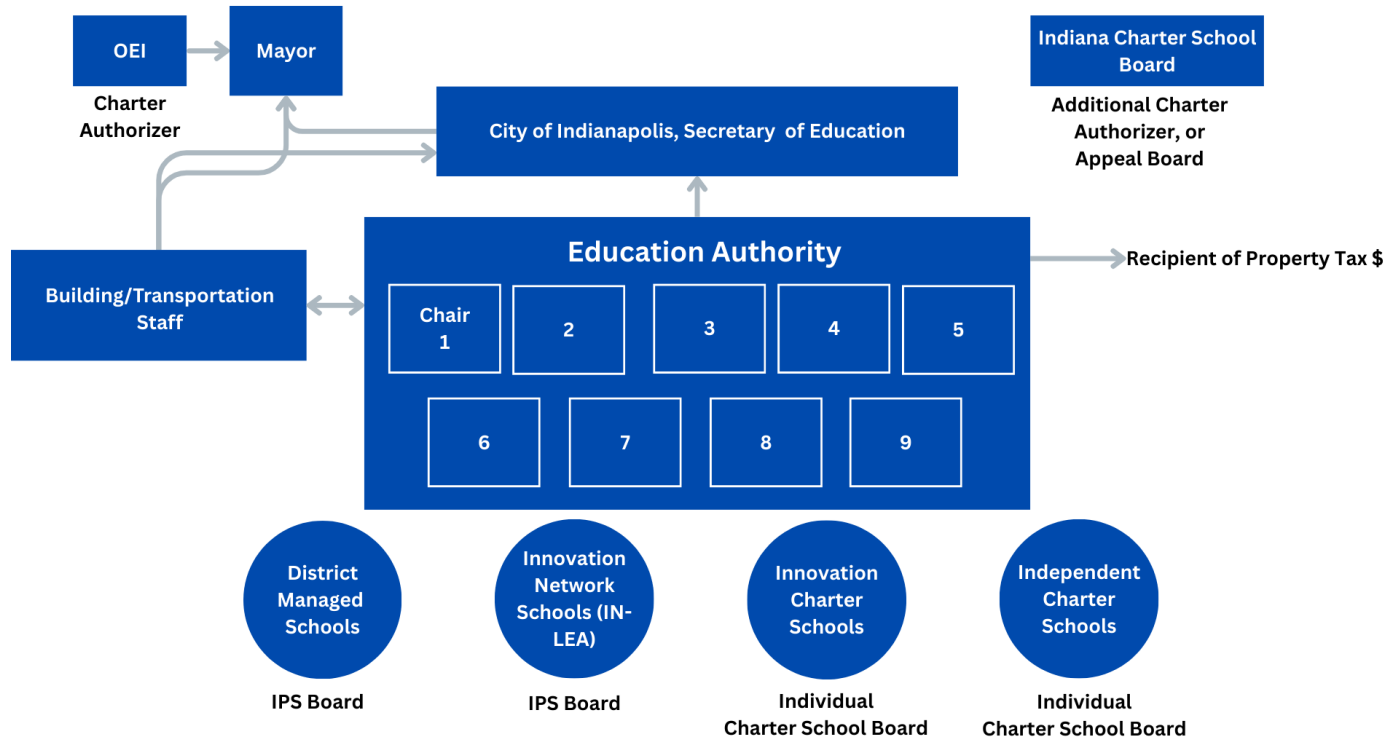


Governance

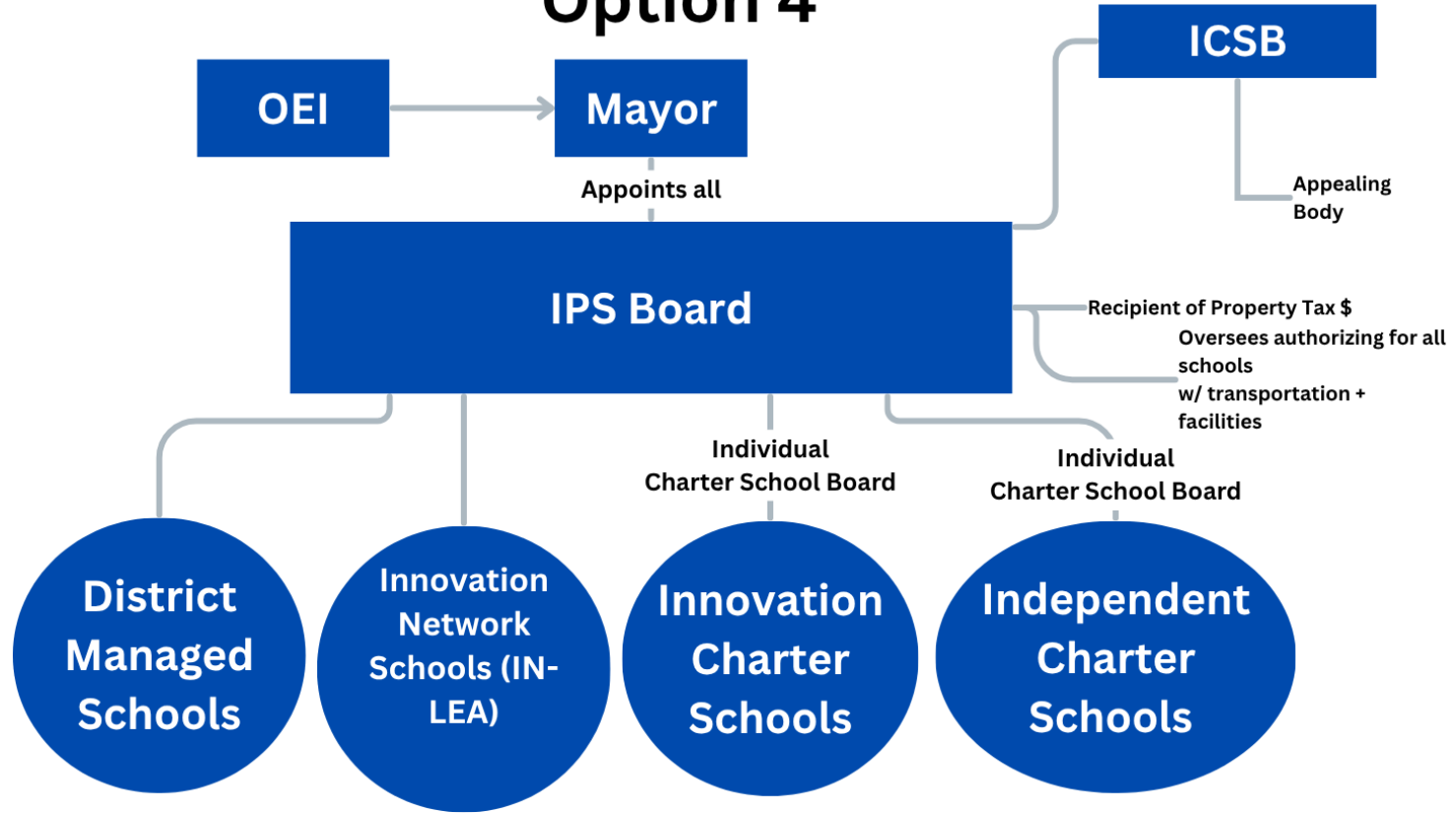
Governance

Model Option 3

Indianapolis Education Authority



Governance Governance Model Option 4



Tentative ILEA Roadmap

- **July/August:** Review current landscape, identify priority data around academics, transportation, facilities, etc.
- **September/October:** Issues deep dive to identify potential challenges and consider draft recommendations
- **November/December:** Continued analysis and refinement of recommendations
- **December:** ILEA adopts final recommendations. Plan submitted to state and local leaders by 12/31.

Closing

Next Meetings:

- **Indianapolis Local Education Alliance Listening Sessions:**

- December 10th, 2025

- Location: KIPP Legacy High School.
- Time: 6:00 PM – 8:00 PM

- December 15th, 2025

- Location: Madam Walker Legacy Center
- Time: 12:00 PM – 2:00 PM

- **Indianapolis Local Education Alliance Meeting**

- 6 p.m., Wednesday, Dec. 17, 2025.

- Details and upcoming meeting schedule available at

<https://www.indy.gov/activity/indianapolis-local-education-alliance>

- Contact ILEA@Indy.gov or IPSEExternalAffairs@myips.org with questions or comments.