

Fountain Square Area Drainage Improvements Project

Public Meeting

September 2024

Indianapolis Department of Public Works



Welcome and Introductions

- Welcome to tonight's meeting
- Purpose
- Introductions
- Meeting plan and room layout
- Thank you for coming!



Project Location

Will help relieve flooding, primarily along Shelby St. from:

- Woodlawn Ave. to the north
- Along Cottage Ave. and Olive St. to the south

One block of Woodlawn Ave. will be repaved between Virginia Ave. and Leonard St.



Project Scope

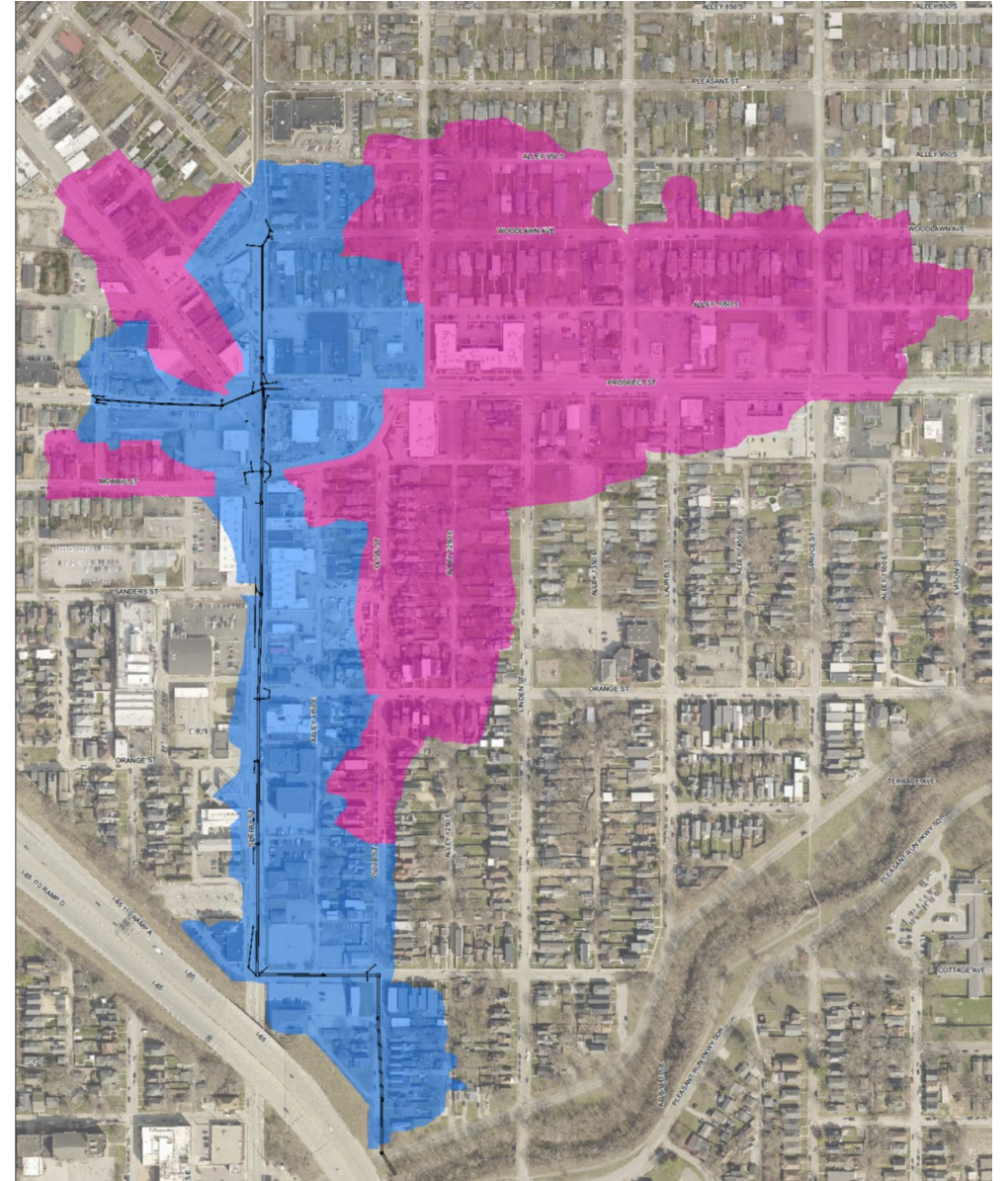
Fountain Square Service Area

- Blue – Current Project Service Area
- Purple – Future Project(s) Service Area

The primary storm sewer layout:

- Discharges to Pleasant Run
- Oliver/Cottage/Shelby

Lateral along Prospect St. from
Shelby St. to St. Patrick St.



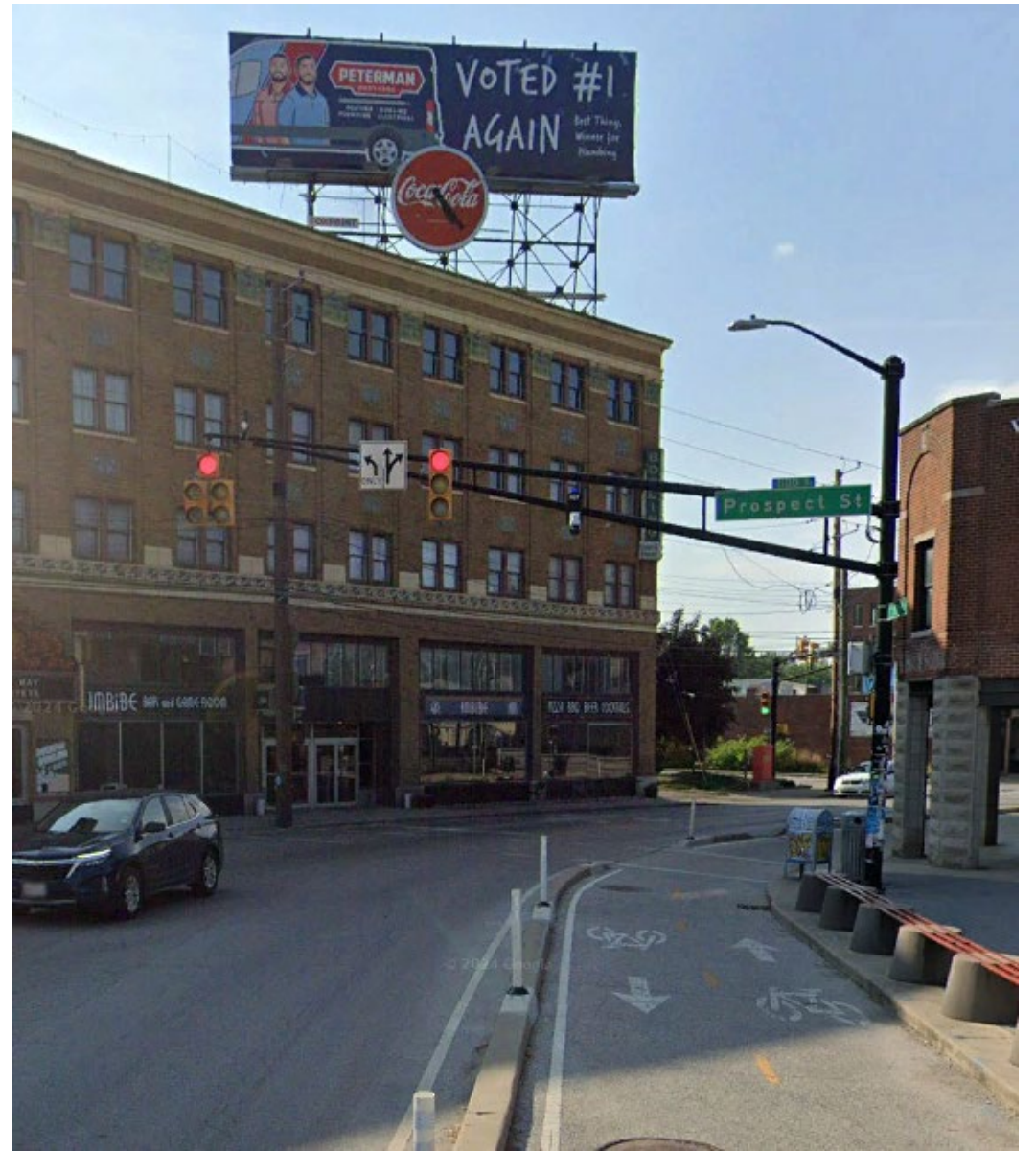
Project Scope

Sanitary/Storm Separation

- Drainage improvements
- Fountain Square is served by old combined sewers
- This project will reduce the occurrence of raw sewage overflows into Pleasant Run

Traffic Signal Modernization

- Shelby St & Morris St
- Shelby St & Prospect St



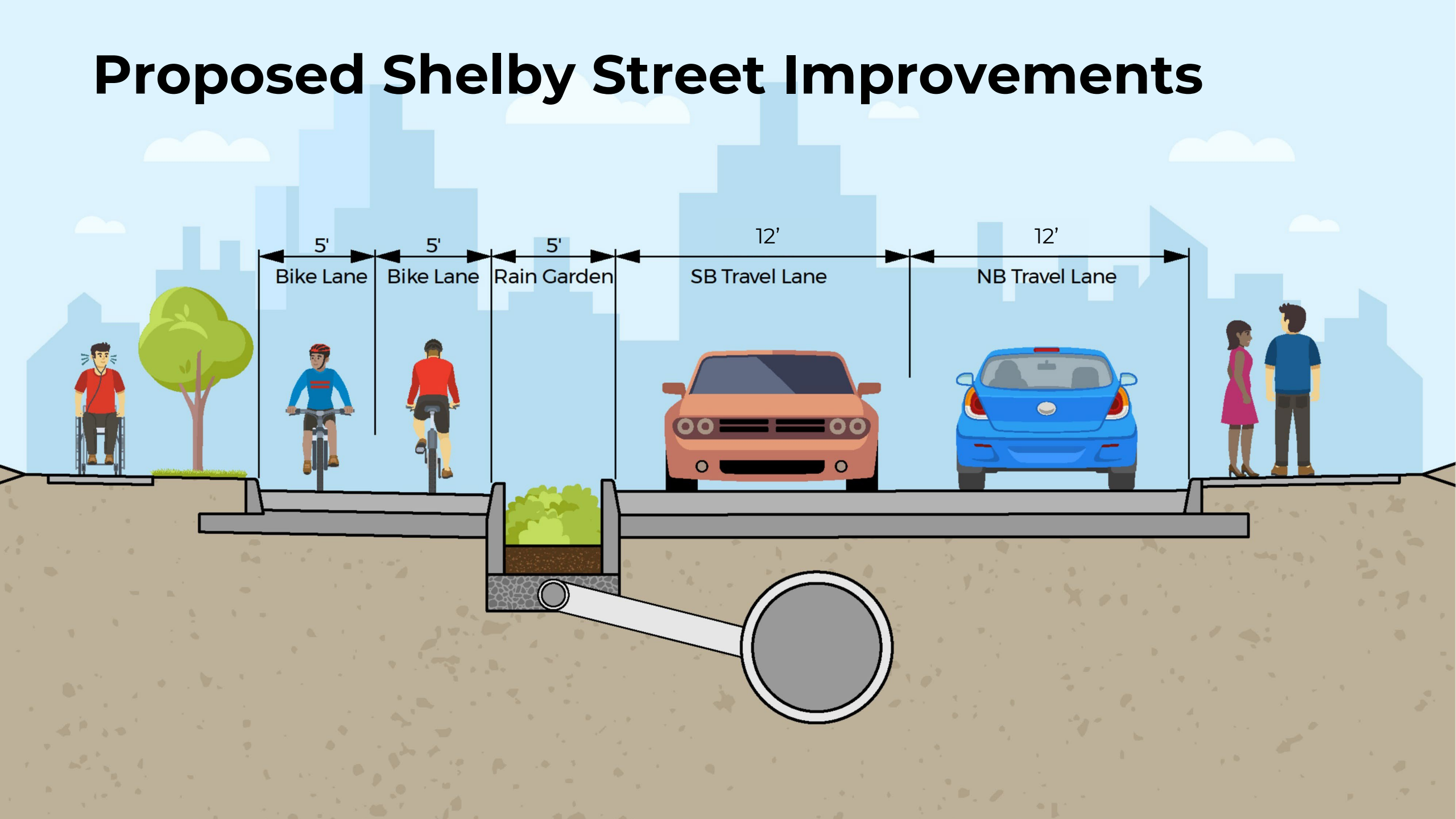
Project Costs and Funding

Construction costs estimated at \$11 million

- Will be funded by the City's stormwater user fee revenues
- These local funds may only be used for drainage improvements and associated restoration work



Proposed Shelby Street Improvements



Project Costs and Funding

Construction costs estimated at \$11 million

- Will be funded by the City's stormwater user fee revenues
- These local funds may only be used for drainage improvements and associated restoration work



Proposed Cycle Track Safety Improvements

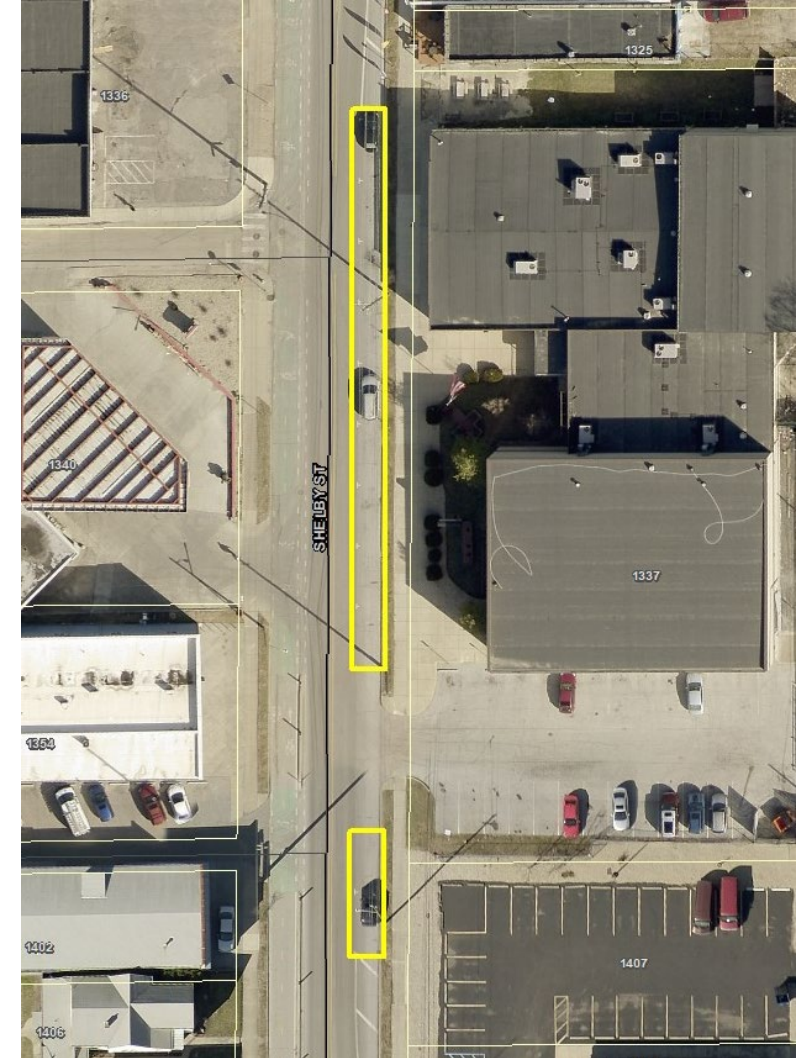
- Replace concrete curb separating cycle track and motorists with bioretention “rain garden” barrier
- Improve safety, drainage, and water quality



Parking and Turn Lane Impacts

Parking Impacts and Utilization

- 11 on-street parking spaces proposed for elimination
- Fountain Square zoned with Transit Overlay District (TOD) which promotes alternative modes of transportation
- City working with FFDA to find a solution to replace lost parking spots with respect to TOD guidelines

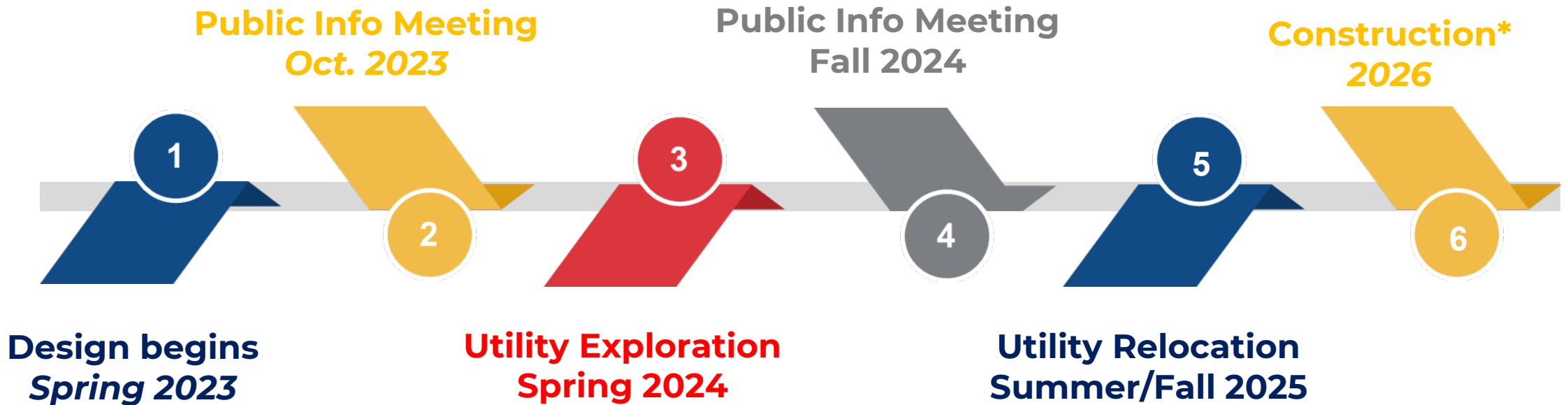


Maintenance of Business (MOB) Plan & BOT Procurement

- Outlines how businesses and other stakeholders will be kept informed
- Details opportunities for businesses to provide input
- Includes team contact information and ways to stay informed in the plan
- Uses project website, emails, site visits, social media, postcards and public meetings
- City plans to build the project with an innovative procurement called Build-Operate-Transfer (BOT)
- Allows City to hire the Contractor prior to design completion to allow for holistic review of constructability & better management of schedule and risks



Draft Schedule

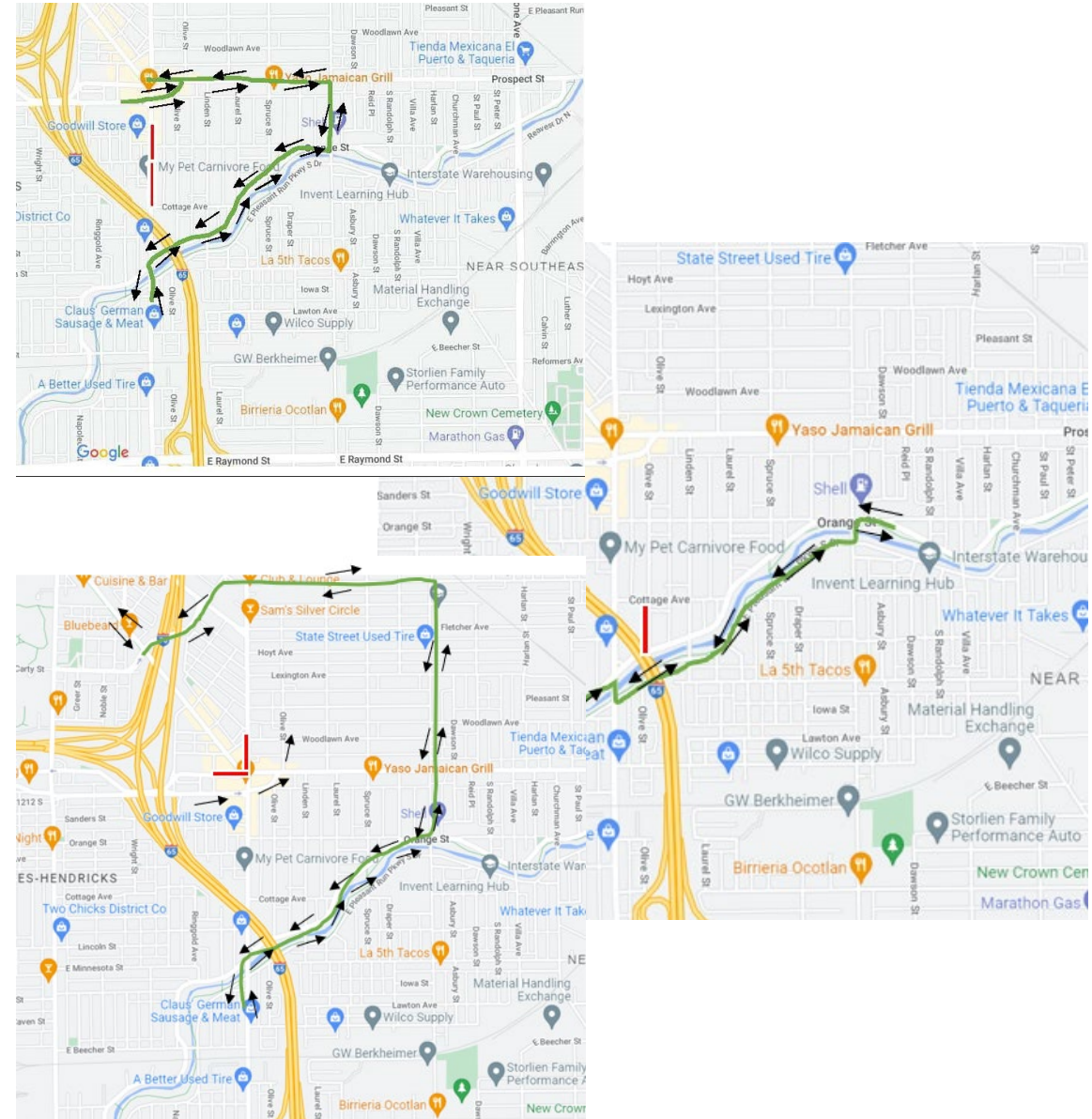


***Draft schedule, subject to change.** Utility work will occur over the next year.

Project Phasing & MOT

Construction and maintenance of traffic (MOT) will be phased to minimize impacts.

- Will consider stakeholder input
- Reduce impacts to residents and businesses
- Maintain routes for motorists, cyclists, and pedestrians
- MOT will be refined throughout design
- Public notifications for restrictions will be actively be relayed to residents & businesses during



Tonight's Breakout Tables

- Roll plots and typical section of the project area
- Proposed cycle track safety improvements/rain garden
- Comment cards at registration
- Public Involvement and other team members around the room

We invite you to have **conversations with our team** and share your feedback on **sticky notes** and/or via **comment cards**.

Thank you

Contact:

Indy DPW Stormwater PIO

Harrison Rice

Harrison.rice@indy.gov

(317) 914-4662