

The Drake Apartments



HISTORIC AREA PRESERVATION PLAN – 43

THE DRAKE APARTMENTS HA-43 (DA)

3060 N Meridian Street Indianapolis, Marion County, Indianapolis

A PART OF THE
COMPREHENSIVE PLAN
FOR MARION COUNTY, INDIANA

Adopted by the Indianapolis Historic Preservation Commission on September 4, 2019

Adopted by the Metropolitan Development Commission on December 16, 2020

Prepared By:

Staff of the Indianapolis Historic Preservation Commission 1842 City-County Building
200 East Washington Street Indianapolis, Marion County, Indianapolis

**METROPOLITAN DEVELOPMENT COMMISSION
MARION COUNTY, INDIANA
RESOLUTION NO. 2019-HP-002**

WHEREAS, the Metropolitan Development Commission of Marion County, Indiana (the “Commission” or “MDC”) serves as the Plan Commission of the Consolidated City of Indianapolis -Marion County, Indiana (the “City”) under IC 36-7-4 (the “Local Planning and Zoning statute”); and

WHEREAS, in that capacity the Commission serves as the planning and zoning authority for the county; and

WHEREAS, as it is the duty of the Commission to adopt, after a public hearing, segments of the Marion County Comprehensive Plan; and

WHEREAS, the Indianapolis Historic Preservation Commission (the “IHPC”) has been given the statutory power and duty to identify by declaratory resolution areas, structures, and sites in the county having historic or architectural significance, and prepare historic preservation plans for them; and

WHEREAS, the IHPC has the power and duty to prepare proposed historic preservation plans for all appropriate areas of the county and submit proposed historic preservation plans to the metropolitan development commission for consideration for adoption as a segment of the comprehensive plan of the county; and

WHEREAS, such plans shall be presented to the metropolitan development commission for public hearing and adoption as a part of the comprehensive plan of the county; and

WHEREAS, the IHPC has officially designated, delineated areas and identified the Drake Apartments as a structure or site of particular historic or architectural significance, and has listed it on the county register of historic places; and

WHEREAS, the proposed historic preservation plan for the Drake Apartment Historic area, if approved and adopted by the metropolitan development commission, shall constitute part of the comprehensive plan of the county; and

WHEREAS, the IHPC considers The Drake Apartments Historic Area to be of historic and architectural significance and a historic area plan has been prepared for The Drake Apartments Historic Area; and

WHEREAS, on September 4, 2019 the Indianapolis Historic Preservation Commission declared The Drake Apartments Historic Area to be of historic and architectural significance; designated it as an historic area and placed on the Marion County Register of Historic Properties; and recommended to the Metropolitan Development Commission that The Drake Apartments

Historic Area 43 (DA) – be adopted as a segment of the Comprehensive Plan for Marion County, Indiana; and

NOW, THEREFORE, BE IT RESOLVED:

1. That, pursuant to I.C. 36-7-4 and I.C. 36-7-11.1, the Metropolitan Development Commission of Marion County, Indiana, hereby amends the Comprehensive Plan For Marion County, Indiana, by the adoption of The Drake Apartments Historic Area Preservation Plan 43 (DA) – The Drake Apartments Historic Area (which is attached hereto), and made a part this resolution and by incorporating the same as an amendment of the Comprehensive Plan for Marion County, Indiana.
2. That the Director of the Department of Metropolitan Development shall make one complete copy of the plan available in the Office of the MDC and shall file one (1) copy of this resolution in the office of the Recorder of Marion County together with a copy or summary of Historic Area Preservation Plan – 43 (DA) – The Drake Apartments Historic Area.

DATE: 12-16-2020

METROPOLITAN DEVELOPMENT
COMMISSION OF MARION COUNTY,
INDIANA

APPROVED AS TO LEGAL FORM
AND ADEQUACY THIS 26 DAY
OF October, 2020.

John J. Dillon III
John J. Dillon III, President

LeAnnette M. Pierce
LeAnnette M. Pierce, Assistant Corporation Counsel

INDIANAPOLIS HISTORIC PRESERVATION COMMISSION

DECLARATORY RESOLUTION 2019-R-04

THE DRAKE APARTMENTS HISTORIC AREA

DECLARING THE DRAKE APARTMENTS HISTORIC AREA TO BE OF HISTORIC AND ARCHITECTURAL SIGNIFICANCE AND RECOMMENDING TO THE METROPOLITAN DEVELOPMENT COMMISSION FOR ADOPTION AS PART OF THE COMPREHENSIVE PLAN FOR MARION COUNTY, INDIANA, HISTORIC PRESERVATION PLAN 43 (DA) – THE DRAKE APARTMENTS HISTORIC AREA.

WHEREAS, the Indianapolis Historic Preservation Commission (the “IHPC”) is required by I.C. 36-7-11.1-6 to prepare a historic preservation plan for designating a historic area of Marion County and to recommend the plan to the Metropolitan Development Commission (the “MDC”) for adoption as a part of the Comprehensive Plan for Marion County; and

WHEREAS, the boundary of The Drake Apartments Historic Area is described and depicted in the proposed historic area preservation plan; and

WHEREAS, the IHPC considers The Drake Historic Area to be of historic and architectural significance and has adopted Declaratory Resolution 2019-R-05 listing The Drake Apartments Historic Area on the Marion County Register of Historic Places; and

WHEREAS, the IHPC has prepared Historic Preservation Plan 43 (DA) – The Drake Apartments Historic Area, which may from time to time be amended, modified, revised, or replaced; and

NOW THEREFORE BE IT RESOLVED that The Drake Apartments Historic Area is hereby declared to be of historic and architectural significance; and

BE IT FURTHER RESOLVED that Historic Preservation Plan 43 (DA) – The Drake Apartments Historic Area (a copy of which is attached hereto), be approved and presented to the MDC for public hearing and adoption as a part of the Comprehensive Plan for Marion County.


The remainder of this document has been left blank intentionally.
Signature page to follow.

Adopted the 4th day of September, 2019

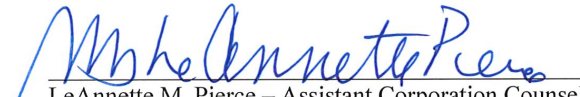
INDIANAPOLIS HISTORIC PRESERVATION COMMISSION

Dated: 9/4/19


William A. Browne, Jr., FAIA – President
Indianapolis Historic Preservation Commission


Joann Green, RLA – Secretary
Indianapolis Historic Preservation Commission

APPROVED AS TO LEGAL FORM AND ADEQUACY
THIS ____ DAY OF _____, 2019.


LeAnnette M. Pierce – Assistant Corporation Counsel
Office of Corporation Counsel, City of Indianapolis

INDIANAPOLIS HISTORIC PRESERVATION COMMISSION

DECLARATORY RESOLUTION
2019-R-05

LISTING THE DRAKE APARTMENTS HISTORIC AREA ON THE MARION COUNTY REGISTER OF HISTORIC PLACES.

WHEREAS, the Indianapolis Historic Preservation Commission is empowered by I.C. 36-7-11.1 to establish and maintain a register of historic properties in Marion County; and

WHEREAS, the Commission has evaluated, according to the criteria set forth in I.C. 36-7-11.1, The Drake Apartments Historic Area, located at 3060 N. Meridian Street, Indianapolis, Marion County, Indiana, and considers it to be of historic and architectural significance and has prepared a historic preservation plan to document this; and

WHEREAS, the boundary of The Drake Apartments Historic Area is described and depicted on the boundary map included in said historic preservation plan;

NOW THEREFORE BE IT RESOLVED that the Drake Apartments Historic Area is hereby designated as a historic area and placed on the Marion County Register of Historic Places.

Adopted the 4th day of September, 2019.

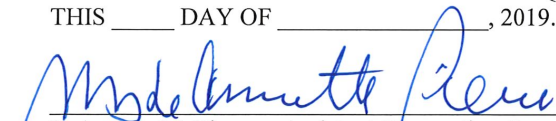
INDIANAPOLIS HISTORIC PRESERVATION COMMISSION

Dated: 9/4/19


William A. Browne, Jr., FAIA – President
Indianapolis Historic Preservation Commission


Joann Green, RLA – Secretary
Indianapolis Historic Preservation Commission

APPROVED AS TO LEGAL FORM AND ADEQUACY
THIS ____ DAY OF _____, 2019.


LeAnnette M. Pierce – Assistant Corporation Counsel
Office of Corporation Counsel, City of Indianapolis

Credits

Mayor Joseph H. Hogsett City of Indianapolis

Department of Metropolitan Development

Acting Director Rusty Carr

Former Director Emily C. Mack

2020 City-County Council Members

Vop Osili, President	Jared Evans	Maggie A. Lewis
Zach Adamson	Keith L. Graves	Frank Mascari
Paul Annee	Monroe Gray, Jr.	Jessica McCormick
John Barth	Michael Paul Hart	Brian Mowery
Alison "Ali" Brown	Jason Holliday	William Oliver
Crista Carlino	La Keisha Jackson	Keith Potts
Michael Paul Dilk	Blake Johnson	David Ray
Ethan Evans	Kristin Jones	Leroy Robinson

Metropolitan Development Commission

John J. Dillon, President	Megan Garver	Bruce Shumacher
Alpha Blackburn	Lena Hackett	William Selm
Karina Bruns	Brigid Robinson	Mindy Westrick

Indianapolis Historic Preservation Commission (IHPC)

William A. Browne Jr., President	Joann K. Green	W. Bruce Stauffer
Sally Cook	James T. Kienle	Alex White
Anne Lear	Kevin C. Murray	Susan Williams

IHPC Staff

Meg Purnsley, Administrator
Emily Jarzen, Principal Architectural Reviewer
Shelbi Long, Senior Architectural Reviewer
Dean Kessler, Architectural Reviewer
Elizabeth Nowak, Preservation Planner
Lorie Finch, Officer Manager
LeAnnette Pierce, Legal Counsel

Contents

- Credits 9
- I. Owner..... 12
- II. Historic and Architectural Design Analysis 12
- III. Legal Description..... 14
- IV. Statement of Significance 16
- V. Preservation Criteria (Architectural and Design Standards for Protecting the Property) 21
- VI. Preservation Objectives..... 21
- VII. Identification and Designation of Historic Area 22
- VIII. Maps and Documentation 23

Figures

Fig.1 Photo of the east elevation of the Drake Apartments	12
Fig.2 Boundary Map of Historic Area	15
Fig.3 Photo of the east elevation of the Drake Apartments	16
Fig.4 Photo of the northeast corner of the Drake Apartments	20
Fig.5 Photo of the Drake Apartments from N. Meridian Street	22
Fig.6 1915 Sanborn Fire Insurance Map.....	23
Fig.7 Excerpt from the Center Township Interim Report (1991)	24
Fig.8 The Drake Apartment Survey Card p.1	25
Fig.9 The Drake Apartment Survey Card p.2	26

The Drake Apartments



Fig.1 East elevation. Photo: IHPC Staff, 2019

I. Owner¹

TREX Enterprises, LLC
3000 North Meridian Street
Indianapolis, IN 46208-4716

II. Historic and Architectural Design Analysis

Construction Information

Date of construction: 1928-1929

Architect: Henry Ziegler Dietz

Builder: Arthur Baynham

Physical Description

Constructed between 1928 and 1929, the Drake is an eight-story, late Tudor Revival apartment building located mid-block on North Meridian Street between East 30th Street and East 32nd Street in Indianapolis, Marion County. A large concrete private garage located behind the Drake is contemporary to the apartment building. The Drake has a rectilinear shape with projecting bays on the north, east, and south façades. Its primary entrance is near the corner of the north and east façades. A secondary entrance is located at the rear of the building on the west façade.

The 85-foot tall Drake Apartments rests on

¹ From the records of the Marion County Assessor's Office on August 1, 2019.

a limestone foundation and was built with fireproof construction. It has a reinforced concrete frame, concrete and tile floors and roof, and 12-inch brick and tile curtain walls. Pyrobar was originally used for interior partitions, as well as the stair and two elevator shafts. On the primary east façade, limestone rises from the foundation to the second floor before transitioning to red brick walls. The north, south, and west elevations are primarily red brick walls with limestone embellishments and limestone sills. Brick, tile, and limestone are laid in geometric patterns on the east façade; these motifs are echoed at the top of the building on all four façades. The brick is laid in a running bond and limestone quoins are found on the corners of the primary eastern façade.

The roof of the Drake is flat with two penthouses and four narrow, brick chimneys. Of the two penthouses, a larger one with rooftop access is located far west on the roof, while a smaller, square penthouse is located just off-center in the middle of the building.

The east façade contains four bays. Beginning at the north corner, bays one and four have double hung, eight-over-one windows on floors two through eight. The first-floor openings have French doors with a four-lite transom. The center two bays are part of a semi-hexagonal bay that projects from the building and is predominately limestone with narrow eight-lite casement windows. There are ten windows in the bay on each story of this façade. Running vertically in the center of this projecting bay is a masonry pattern made

from brick, tile, and limestone that alternates cross-shapes, three-quarter cross shapes, and a nine-square checkerboard pattern.

The north and south façades are symmetrical. They both have nine bays. Beginning at the east corner on the north façade and the east corner on the south façade, bay six projects from the façade face. Limestone rises to cover the entirety of the first floor on both these bays and a limestone and brick checkerboard detail is centered at the top of these bays near the roofline. Double-hung, eight-over-one windows with limestone sills are found in each bay.

The west façade has three bays and is the least ornamented of the four elevations of the Drake. A secondary entrance with an awning is located in the center bay. The same eight-over-one windows are found on this elevation. There are no limestone details on this façade apart from the window sills.

The garage at the rear of the property is a one-story concrete-masonry building. The 1915 revised Sanborn map indicates that the garage had a concrete floor with two rows of steel columns. The garage was built to service the tenants of The Drake and appears at the same time on Sanborn maps as the apartment building.

III. Legal Description

The subject property is comprised of one parcel of land known as “the historic area,” which includes two buildings: The Drake apartment building, and a one-and-one-half story concrete garage. The property is described as follows:

Lot 19 in Square 2 in Bruce’s North Park Addition to the City of Indianapolis, the plat of which is recorded in Plat Book 3, page 193, in the Office of the Recorder of Marion County, Indiana.

ALSO:

Part of Lots 6 and 7 in Square 2 in Bruce’s North Park Addition to the City of Indianapolis, the plat of which is recorded in Plat Book 3, page 193, in the Office of the Recorder of Marion County, Indiana, more particularly described as follows:

Beginning at a point on the East line of said Lot 7, a distance of 21.33 feet North of the Northeast corner of said Lot 6; thence South along the East line of Lots 7 and 6, a distance of

42.67 feet; thence West parallel with the North line of said Lot 6, a distance of 70.00 feet; thence North parallel with the East line of said 6 and 7, a distance of 42.67 feet; thence East, parallel with the North line of said Lot 6, a distance of 70.00 feet to the point of beginning.

Boundary Map of the Historic Area-- The Drake Apartments

3060 North Meridian Street
Center Township, Marion County, Indiana



Fig.2 Boundary Map of Historic Area

IV. Statement of Significance

Significance

The Drake apartment building is significant for its architecture, its association with apartment construction in the City of Indianapolis in the twentieth century, and for its association with its architect, H. Ziegler Dietz. It is an intact example of luxury tower apartment buildings from this period that were popular on the north side of Indianapolis. The Indianapolis Star went as far as to describe The Drake as “One of the most exclusive apartment buildings in Indianapolis” on September 11, 1932.¹

The Drake Apartments were rated as “Outstanding” in the Center Township, Marion County Interim Report (1991) as part of a surveyed historic district identified in the survey as the North Meridian Street Apartments Historic District. From the Interim Report:

“The “O” [outstanding] rating means the property has enough historic or architectural significance that it is already listed, or should be considered for individual listing, in the National Register of Historic Places. “Outstanding” resources can be of local, state, or national importance.”²



Fig.3 East and partial south elevations.
Photo: IHPC Staff, 2019

Architectural Significance

The Drake

Indianapolis’s golden era of apartments and flats was concomitant with the economic and population growth of the city from 1890 through 1930. Most construction occurred between 1895 and 1905 and had almost completely ebbed by the late 1920s.³ The Drake, built between 1928 and 1929, was built at the tail end of this period, and is significant

1 “Exclusive Drake Units Available—Apartments offered in Seven-Story Building on Meridian Street,” Indianapolis Star, September 11, 1930.

2 Center Township, Marion County Interim Report: Indiana Historic Sites and Structures Inventory, Indiana Department of Natural Resources & Historic Landmarks Foundation of Indiana, 1991, p. ix.

3 Apartments and Flats of Downtown Indianapolis, Section 8, p. 15, 17.

for its expression of late Tudor Revivalism and as one of Indianapolis's few extant tower apartment buildings from this time.

Of the apartment and flat buildings built between 1890 and 1930 in Indianapolis, most were not multi-storied apartment buildings like the Drake. Other extant high-rise examples include the Ambassador (NR-0616.03), the Spink (NR-1613), the Wyndham (NR-0616.33), and the Dartmouth (NR-0616.10), which, like The Drake, were built by well-off real estate developers or investors.⁴ According to the Apartment Flats of Downtown Indianapolis National Register multiple property document listing, the predominate styles found in Indianapolis apartment and flat buildings from 1890 through 1930 were classical revival expressions; revival styles in the English tradition only began to emerge in these buildings in the 1920s.⁵

There are two other noted English Tudor Revival apartment buildings from this period still extant in Indianapolis comparable to the Drake: the Wyndham (1929) and the Dartmouth (1928), both of which are listed in the National Register of Historic Places. Like the Drake, these apartment buildings have casement windows and contrasting limestone and red brick walls that strongly evoke traditional English architecture. Unlike the Drake, these buildings were designed with two towers on their primary façade; The Drake's focal point is the singular, central projecting partial

hexagonal bay on its eastern façade. The Drake also lacks crenellated parapet walls, a feature that defines the rooflines of the Wyndham, the Dartmouth, and the Tudor Revival style as a whole.

The Drake's unique expression of Tudor Revivalism is easily seen in its immediate setting. East across North Meridian Street from the Drake are the Buckingham Apartments (1909, NR-1112), Balmoral Court (1916, NR-1114), and the Admiral Apartments (1929). These three architecturally significant apartment buildings respectively represent Jacobethan Revival,

Colonial Revival, and Art Deco styles. The Buckingham and Balmoral Court are low-rise, courtyard designs of the period, while the Admiral a ten-story tower building. Though the major elements of the Drake's design are Tudor, Art Deco influences can be seen in the heavy geometric embellishments on the eastern façade and at the patterning of the quoins near the roofline. Compared to the Buckingham and the Admiral, the Drake shows a transition in these architectural styles in the late 1920s in a way not seen on other Tudor Revival apartment buildings in Indianapolis.

Architect Henry Ziegler Dietz and Builder Arthur Banyham

Apartments built at the turn of the twentieth century tended to be the works of well-known local architects and builders. Henry Ziegler Dietz was an architect active in the late nineteenth century through the mid-twentieth century. A Pennsylvanian native,

4 *Ibid.*, p. 17.

5 *Ibid.*, Section 7, p. 7.

Dietz attended Washington University in St. Louis. He specialized in hotel design and designed several hotels in the 1910s that have been listed in the National Register of Historic Places (NRHP), including the Fowler Hotel in Lafayette, Indiana (1915), the McCurdy Hotel in Evansville, Indiana (1917), and the Hotel Aurora in Aurora, Illinois (1917). These hotels reflect a simple Neoclassical Revival style, a style that Dietz referenced in his 1928 design for the Meridian Street Apartments, which is listed in the NRHP as part of the Shortridge-Meridian Street Apartments Historic District.⁶ Dietz is also known locally for designing the Rivoli Theater on E 10th Street (National Register, 2004) and for his extensive work along Meridian Street in Indianapolis. In addition to the Meridian Street Apartments, he designed and built seven other apartment buildings below 38th Street, including the Drake, between 1924 and 1930.

In Indianapolis, Dietz is recorded working on multiple projects with developer Arthur Banyham, including an addition to the Sloanewood Apartments in the Shortridge-Meridian Street Historic District.⁷ The two also worked together on the Drake, which was a costly project at the time. The Indianapolis Star reported that, when construction on the Drake began in 1928, the project would cost \$220,000.⁸ When first completed, the Drake

was known as Baynham & Co. Apartments.⁹ Banyham also built the Charmwood Apartments, Pennlawn and Pennwood homes, the Drake Motor Inn, the former Pennsylvania Hotel, and several private residences in Indianapolis.¹⁰

Both Dietz and Banyham left a lasting mark on Indianapolis's landscape. Their contributions to the built environment are significant, Dietz especially for his unique expression of contemporary styles in and beyond Indianapolis.

9 The building received its current name, The Drake, by 1930. "Exclusive Drake Units Available—Apartments offered in Seven-Story Building on Meridian Street," Indianapolis Star, September 11, 1930.

10 "Arthur Banyham, Builder, Succumbs," Indianapolis Star, Aug. 14, 1968.

6 Shortridge-Meridian Street Apartments Historic District, National Register of Historic Places, 2000.

7 Ibid. Section 7, p. 9.

8 "Realty Sales Jump in Week—Proposed Construction Totals \$855,460--\$220,000 Apartment Started," Indianapolis Sunday Star, November 23, 1928.

Historic Significance

Following a long period of relative economic instability, Indianapolis experienced huge economic growth at the turn of the nineteenth century that was driven by the expansion of the railroad and new manufacturing. With that prosperity came people. From 1890 through 1930 Indianapolis experienced a large influx of new residents to the city, jumping from a city population of 105,436 in 1890 to 314,194 in 1920.¹ New housing went up at a rapid pace, including row houses, apartment and flats buildings. The first “modern” apartment building—the Delaware—was built in 1885 at the corner of Delaware and Michigan Streets. This building marked the beginning of an era of fashionable downtown apartment buildings and was followed by the exceedingly popular Blacherne (402 N Meridian Street) in 1895.²

The initial wave of apartment buildings was built immediately north of the heart of downtown Indianapolis: “By 1910, the near north side became the ‘flat district.’”³ These apartment buildings were typically located near trolley lines to capitalize on easy access to downtown and downtown jobs. While apartments and flats were popular

with renters, they were also sought after by single men and women and socialites. Many prominent Indianapolis residents of the period are listed in the Blue Book with addresses at the Blacherne, the Spink Hotel, and other downtown apartment buildings. Apartments along North Meridian Street, like the Drake, the Admiral Apartments, the Balmoral Court, and the Buckingham, carried with them the same prestige as the spacious single-family homes long associated with the Meridian Street corridor. Advertising for the Drake in 1932 stated that “Highest References Required” for any potential tenants.⁴

With abundant suitable sites for building, Indianapolis developers and architects typically kept apartment buildings to modest scales. Most apartment buildings in the city were under three or four stories in height, even along major thoroughfares like North Meridian Street.⁵ Tower apartments—apartments requiring or including elevators to reach upper floors—were more the exception than the norm. To date, there are less than twelve such buildings identified as extant and historically significant within Indianapolis of this type.

Advertising for the Drake emphasized its luxury amenities and spacious, bright units. Announcements printed in the Indianapolis Star in 1932 highlighted the apartment’s first floor lounge and lobby, automatic elevator

1 Indiana’s Changing Population 1880-1980, Indiana State Board of Health, 1982; Census of Population, 1980-1920, U.S. Bureau of the Census, quoted in Apartments and Flats of Downtown Indianapolis, Section 8, p.13, National Register Multiple Property Listing Document, 1984.

2 Apartments and Flats of Downtown Indianapolis, Section 8, p.15.

3 “Multi-Family Residential Architecture,” Encyclopedia of Indianapolis, E.d. David J Bodenhamer, Robert G. Barrows, David G. Vanderstel, (Indiana University Press: Bloomington & Indianapolis), 1994, p. 1025.

4 “Announcement...The Drake Formerly Known as 3060 No. Meridian,” Indianapolis Sunday Star, Sept. 11, 1932.

5 Apartments and Flats of Downtown Indianapolis, Section 8.

service, stone fireplaces in all unit living rooms, heating, in-building laundry, and its garage, which was staffed by an attendant day and night.⁶

The scale and robustness of apartment construction between 1890 and 1930 in downtown Indianapolis was not repeated until the late 1970s and 1980s.⁷ Stopped largely by the economic downturn of the Great Depression, the era of downtown apartments and flats is a physical record of the population growth Indianapolis experienced at the beginning of the twentieth century.

6 "Exclusive Drake Units Available: Apartments Offered in Seven-Story Building on Meridian Street." *Indianapolis Sunday Star*, Sept. 11, 1932; "Announcement... The Drake Formerly Known as 3060 No. Meridian," *Indianapolis Sunday Star*, Sept. 11, 1932.

7 "Multi-Family Residential Architecture," *Encyclopedia of Indianapolis*, p. 1026.



Fig.4 East and partial north elevation. Photo: IHPC Staff, 2019

V. Preservation Criteria (Architectural and Design Standards for Protecting the Property)

1. Any development, construction, reconstruction, or alteration to the exteriors of any structures or site within the historic area shall be appropriate to the property's historic and architectural values and significance.
2. Any development, construction, reconstruction, or alteration to the exteriors of any structures or site within the historic area shall be visually compatible and appropriate in function, general design, arrangement, color, texture, and materials to the design and character of the subject property.
3. The IHPC shall use the Secretary of the Interior's Standards for the *Treatment of Historic Properties: With Guidelines for Preserving, Rehabilitation, Restoring, & Reconstructing Historic Buildings*¹ to determine appropriateness when it reviews and makes decisions regarding development, construction, reconstruction, preservation, restoration, rehabilitation, alteration, and demolition of the subject structures/historic area.

VI. Preservation Objectives

1. The subject structures, exterior features of the site and architectural and historic character thereof shall be preserved as a significant resource of Indianapolis and Marion County.
2. Encourage adaptive reuse/redevelopment of the historic Drake Apartment Building that retains and preserves the exterior features of the structures, and not demolition of the historic Drake Apartment Building or its historic garage on the site.

¹ Anne E. Grimer, Secretary of the Interior's Standards for the Treatment of Historic Properties: With Guidelines for Preserving, Rehabilitating, Restoring & Reconstructing Historic Buildings, U.S. Department of the Interior, National Park Service, Technical Preservation Services, 2017, <https://www.nps.gov/tps/standards.htm>.

VII. Identification and Designation of Historic Area

The parcel at 3060 N Meridian Street, Indianapolis, Marion County, Indiana is hereby identified and designated as an Indianapolis Historic Landmark. This plan has been prepared in accordance with the State Statute IC 36-7-11.1, which establishes and empowers the Indianapolis Historic Preservation Commission. After the approval of this plan by the Indianapolis Historic Preservation Commission and its adoption by the Metropolitan Development Commission as part of the Marion County Comprehensive Plan, the provisions and requirements of IC 36—11.1 and this plan applies to all property and structures within the delineated area.



Fig.5 Southeast corner of the Drake Apartments as seen from North Meridian Street. Photo: IHPC Staff, 2019

VIII. Maps and Documentation

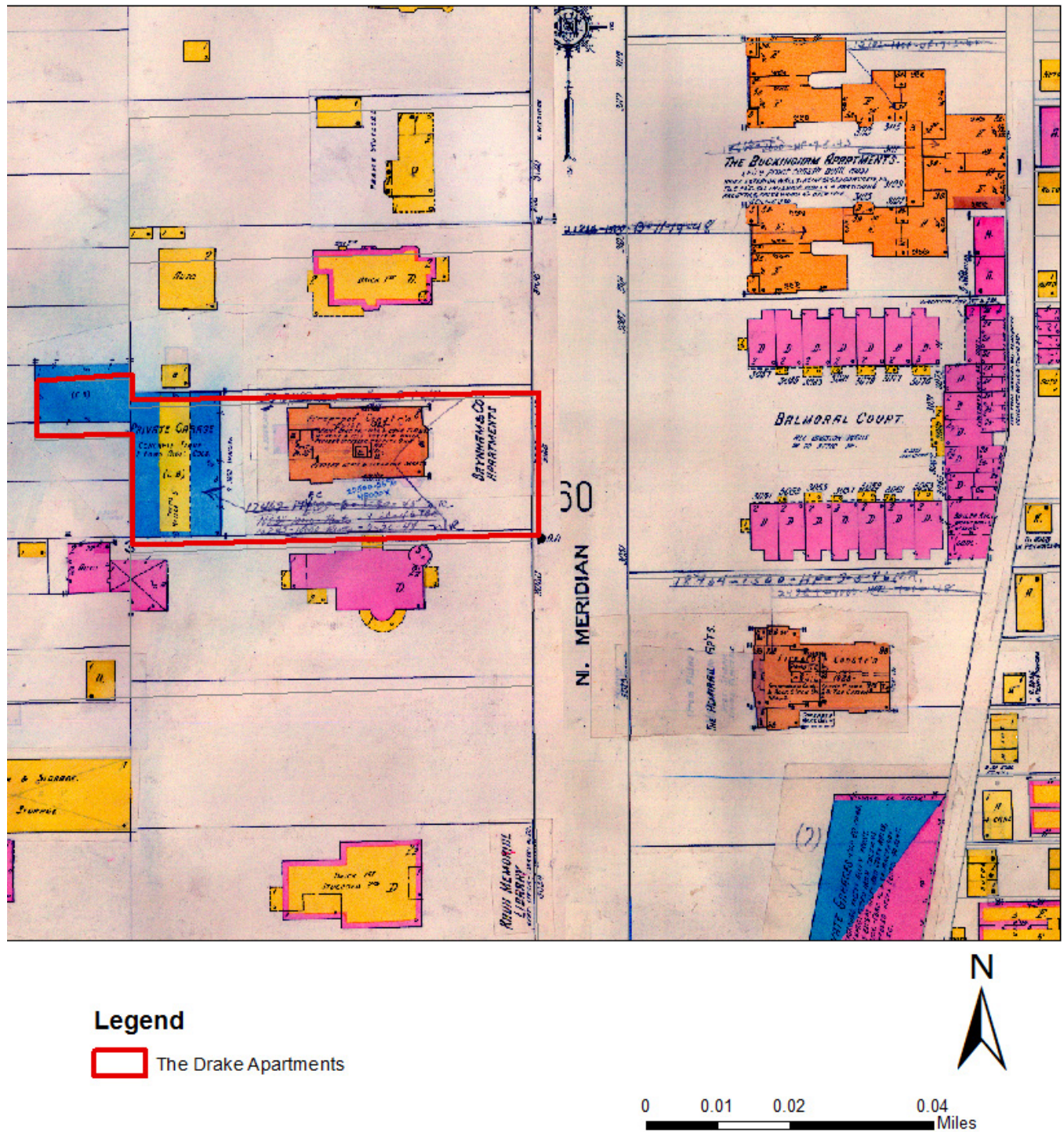
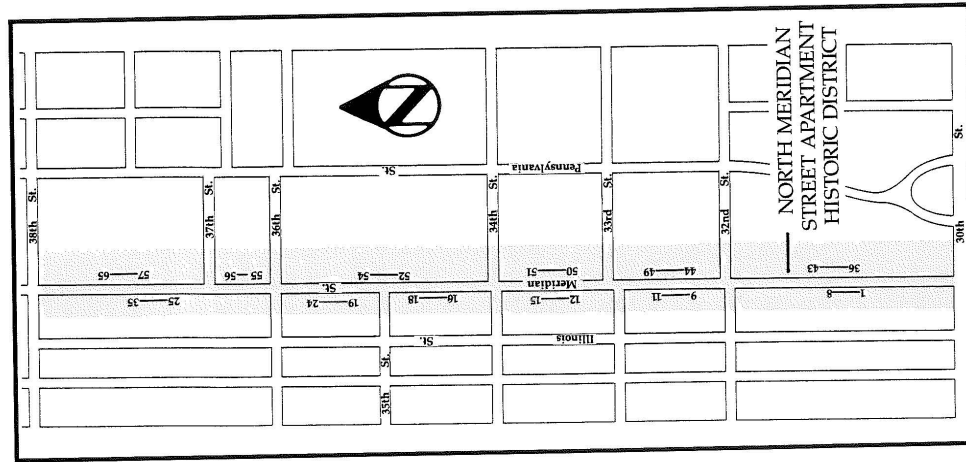


Fig.6 1915 Sanborn Fire Insurance Map

North Meridian Street Apartments Historic District (098-296-06001-065)



North Meridian Street has long been associated with Indianapolis' prominent families. Magnificent residences once lined the street as far south as downtown. The area encompassing the district was originally platted prior to 1887 in several sections. A few remaining examples of these early homes are still in existence today. The Free Classic style Schnull-Rauch House (002) and the Alfred M. Glosbrenner Mansion (009) built in the Jacobethan Revival style are two examples. Just south of the district are the Fairbanks Residence (00621) and the Louis Levy Mansion (00622).

Today the district is best known for its 1920s and '30s apartment buildings. Excellent examples of a variety of architectural styles abound. Like the former homeowners of the street, the apartments also housed numerous influential and prominent people. In some buildings, such as the Jacobethan Revival style Buckingham (040), apartments contained small bedrooms for live-in domestic help.

Other buildings which stand out along the street are the Admiral (038) with its Art Deco stepped-back roofline; the Colonial Revival style Balmoral (039); and The Howland (061), a Jacobethan Revival apartment with a small terra cotta mural and beautiful limestone detailing.

Today the street continues the tradition of apartment living but several office buildings, a hospital, and the Children's Museum are interspersed among the original structures. The apartments, nonetheless, continue to be the dominating feature of the district.

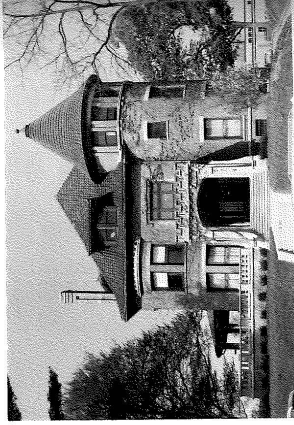
No. Add. Description

North Meridian Street (West Side)

001 3000 The Children's Museum; 1976;

Architect: Wright, Porteous & Lowe (NC) Inside: Broad Ripple Park Dentzel Carousel; c.1900 (O) NR, NHL

002 3050 Schnull-Rauch House; 1904; Architect: Vonnegut & Bohn (O) NR



002

003 3060 The Drake; c.1920 (O)

004 3100 Commercial Building; 1964; Architect: Lennox, Matthews, Simmons & Ford, Inc. (NC)

005 3120 House; c.1910 (NC)

006 3130 Commercial Building; 1958; Architect: Lennox, Matthews, Simmons & Ford, Inc. (NC)

007 3140 Apartment Building; c.1925 (C)

008 3190 House; c.1900 (N)

009 3202 Alfred M. Glosbrenner Mansion; 1910 (O) NR

010 3232 Winona Memorial Hospital; c.1965 (NC)

011 NA Winona Professional Building; c.1965 (NC)

012 3310 Marblehead Apartments; c.1930 (C)

013 3330 Wentworth-Stuyvesant; c.1920 (N)

014 33

015 33

016 34

017 34

018 34

019 35

020 35

021 35

022 35

023 35

024 36

025 36

026 36

027 36

028 37

029 37

030 37

031 37

032 37

033 37

034 37

035 37

North M

036 300

037 301

038 302

039 305

Fig. 7 Indiana Department of Natural Resources and Historic Landmarks Foundation of Indiana, Center Township, Marion County Interim Report: Indiana Historic Sites and Structures Inventory (Indianapolis: Historic Landmarks Foundation of Indiana, 1991). Courtesy of Indiana Landmarks.

